

Supplemental/Bid Bulletin
Addendum No. 1

TITLE : Rebidding for the Supply and Delivery of Office Uniform (CY 2024) of
DSWD Field Office VII Officials and Employees

ITB NO. : DSWD7-PB-2024-57

DATE : 07 November 2024

Issued pursuant to Section 22.5 of the IRR of Republic Act 9184 to clarify and/or amend certain provision on the Bidding Documents issued for this project, considering the issues raised and clarifications made by prospective bidders during the Pre-bid Conference held on **November 05, 2024**, and shall form an integral part thereof, viz:

Subject	Amendment/Agreement/Clarification				
Section VII. Technical Specifications	<p>➤ This supplemental / bid bulletin is issued to emphasize the changes on the specifications of the following:</p>				
	<table><tr><th>FROM</th><th>TO</th></tr><tr><td><p>1. Blouse 1 Short-sleeves Off-white trubenized blouse accentuated with 3/4-length vertical woven trimmings (Kalinga pattern from Mindanao), shall contain at least 5% by weight for abaca, banana or pineapple silk, as well as others, such as Bamboo, among others in Polyester fabric and 6 pcs. off-white pearl studded round metal shank buttons (see attached sample)</p><p>Blouse 2 Mini Kimono Sleeves, round neck off white blouse accentuated with woven trimmings (Kalinga pattern from Mindanao), shall contain at least 5% by weight for abaca, banana or pineapple silk, as well as others, such as Bamboo, among others in polyester fabric, and 6 pcs. off-white pearl studded square metal</p></td><td><p>1. Blouse 1 Short-sleeves Off-white trubenized blouse accentuated with 3/4-length vertical woven trimmings (Kalinga pattern from Mindanao, <u>or any pattern closest thereof</u>), shall contain at least 5% by weight for abaca, banana or pineapple silk, as well as others, such as Bamboo, among others in Polyester fabric and <u>6 pcs. shank buttons</u> (see attached sample)</p><p>Blouse 2 Mini Kimono Sleeves, round neck off white blouse accentuated with woven trimmings (Kalinga pattern from Mindanao, <u>or any pattern closest thereof</u>), shall contain at least 5% by weight for abaca, banana or pineapple silk, as well as others, such as Bamboo, among others in polyester fabric, and <u>6 pcs. shank</u></p></td></tr></table>	FROM	TO	<p>1. Blouse 1 Short-sleeves Off-white trubenized blouse accentuated with 3/4-length vertical woven trimmings (Kalinga pattern from Mindanao), shall contain at least 5% by weight for abaca, banana or pineapple silk, as well as others, such as Bamboo, among others in Polyester fabric and 6 pcs. off-white pearl studded round metal shank buttons (see attached sample)</p> <p>Blouse 2 Mini Kimono Sleeves, round neck off white blouse accentuated with woven trimmings (Kalinga pattern from Mindanao), shall contain at least 5% by weight for abaca, banana or pineapple silk, as well as others, such as Bamboo, among others in polyester fabric, and 6 pcs. off-white pearl studded square metal</p>	<p>1. Blouse 1 Short-sleeves Off-white trubenized blouse accentuated with 3/4-length vertical woven trimmings (Kalinga pattern from Mindanao, <u>or any pattern closest thereof</u>), shall contain at least 5% by weight for abaca, banana or pineapple silk, as well as others, such as Bamboo, among others in Polyester fabric and <u>6 pcs. shank buttons</u> (see attached sample)</p> <p>Blouse 2 Mini Kimono Sleeves, round neck off white blouse accentuated with woven trimmings (Kalinga pattern from Mindanao, <u>or any pattern closest thereof</u>), shall contain at least 5% by weight for abaca, banana or pineapple silk, as well as others, such as Bamboo, among others in polyester fabric, and <u>6 pcs. shank</u></p>
	FROM	TO			
<p>1. Blouse 1 Short-sleeves Off-white trubenized blouse accentuated with 3/4-length vertical woven trimmings (Kalinga pattern from Mindanao), shall contain at least 5% by weight for abaca, banana or pineapple silk, as well as others, such as Bamboo, among others in Polyester fabric and 6 pcs. off-white pearl studded round metal shank buttons (see attached sample)</p> <p>Blouse 2 Mini Kimono Sleeves, round neck off white blouse accentuated with woven trimmings (Kalinga pattern from Mindanao), shall contain at least 5% by weight for abaca, banana or pineapple silk, as well as others, such as Bamboo, among others in polyester fabric, and 6 pcs. off-white pearl studded square metal</p>	<p>1. Blouse 1 Short-sleeves Off-white trubenized blouse accentuated with 3/4-length vertical woven trimmings (Kalinga pattern from Mindanao, <u>or any pattern closest thereof</u>), shall contain at least 5% by weight for abaca, banana or pineapple silk, as well as others, such as Bamboo, among others in Polyester fabric and <u>6 pcs. shank buttons</u> (see attached sample)</p> <p>Blouse 2 Mini Kimono Sleeves, round neck off white blouse accentuated with woven trimmings (Kalinga pattern from Mindanao, <u>or any pattern closest thereof</u>), shall contain at least 5% by weight for abaca, banana or pineapple silk, as well as others, such as Bamboo, among others in polyester fabric, and <u>6 pcs. shank</u></p>				

	<p>shank buttons (see attached sample)</p> <p>2. Polo Barong 1 Short sleeves Off-white trubenized polo barong accentuated with 3/4-length vertical woven trimmings (Kalinga pattern from Mindanao), shall contain at least 5% by weight for abaca, banana or pineapple silk, as well as others, such as Bamboo, among others in polyester fabric, and 8 pcs. off-white pearl studded round metal shank buttons. (see attached sample)</p> <p>Polo Barong 2 Short sleeve trubenized polo jacket accentuated with woven trimmings (Kalinga pattern from Mindanao) on the collar and vertical inverted pleats in Off-white polyester fabric, 5% by weight for abaca, banana or pineapple silk, as well as others, such as Bamboo, among others and front pocket on the right chest and 8 pcs. off-white pearl studded square metal shank buttons (See attached sample)</p> <p>Other Requirements</p> <ol style="list-style-type: none"> 1. Participating Bidders shall submit together with their bidding documents, 2" x 2" sample/swatches of fabric, to include swatches of ethnic design (kalinga pattern from Mindanao) for the prescribed office uniforms; 2. xxx 3. In relation to the Section 3, Rule V of the amended Implementing Rules and Regulations of RA No. 9242, the Lowest 	<p><u>buttons</u> (see attached sample)</p> <p>2. Polo Barong 1 Short sleeves Off-white trubenized polo barong accentuated with 3/4-length vertical woven trimmings (Kalinga pattern from Mindanao, <u>or any pattern closest thereof</u>), shall contain at least 5% by weight for abaca, banana or pineapple silk, as well as others, such as Bamboo, among others in polyester fabric, and <u>8 pcs. shank buttons</u>. (see attached sample)</p> <p>Polo Barong 2 Short sleeve trubenized polo jacket accentuated with woven trimmings (Kalinga pattern from Mindanao, <u>or any pattern closest thereof</u>) on the collar and vertical inverted pleats in Off-white polyester fabric, 5% by weight for abaca, banana or pineapple silk, as well as others, such as Bamboo, among others and front pocket on the right chest and <u>8 pcs. shank buttons</u> (See attached sample)</p> <p>Other Requirements</p> <ol style="list-style-type: none"> 1. Participating Bidders shall submit together with their bidding documents, 2" x 2" sample/swatches of fabric, to include swatches of ethnic design (kalinga pattern from Mindanao, <u>or any pattern closest thereof</u>) for the prescribed office uniforms; 2. Xxx 3. In relation to the Section 3, Rule V of the amended Implementing Rules and Regulations of RA No. 9242, the Lowest
--	---	--

		<p>Calculated and Responsive Bidder shall submit the following required certifications, as applicable::</p> <ol style="list-style-type: none"> Certificate from DOST-PTRI stating that the fabric is compliant with the provisions of RA. No. 9242; Attestation issued by the textile producer stating that their fabric is part of the stock that has been certified by DOST-PTRI as PTF compliant, to include the identification as marked in the selvage of the fabric; Permit to transport fibers from DA-PhilFIDA stating the origin of the fiber, such as abaca, banana, pineapple and other fibers; 	<p>Calculated and Responsive Bidder shall submit <u>within fifteen (15) working days upon receipt of Notice to Proceed (NTP)</u> of the following required certifications:</p> <ol style="list-style-type: none"> Certificate from DOST-PTRI stating that the fabric is compliant with the provisions of RA. No. 9242; Attestation issued by the textile producer stating that their fabric is part of the stock that has been certified by DOST-PTRI as PTF compliant, to include the identification as marked in the selvage of the fabric; Permit to transport fibers from DA-PhilFIDA stating the origin of the fiber, such as abaca, banana, pineapple and other fibers;
--	--	---	---

Attached herewith is the **Revised Section VII. Technical Specifications.**

This Bid Bulletin shall form part of the bidding documents.

Please be guided accordingly.



ROSEMARIE S. SALAZAR

Chairperson, Bids and Awards Committee I



Revised Section VII. Technical Specifications

Bidders must state either “**Comply**” or “**Not Comply**” in the **Statement of Compliance** column to each indicated parameter or specification.

NO.	ITEM DESCRIPTION	STATEMENT OF COMPLIANCE	BIDDER'S REMARKS
1.	Female: Color/Material - 713 sets (Composed of 2 blouses & 1 slacks or skirt per set)		
	<u>Blouse 1</u> - Short-sleeves Off-white trubenized blouse accentuated with 3/4-length vertical woven trimmings (Kalinga pattern from Mindanao, or any pattern closest thereof), shall contain at least 5% by weight for abaca, banana or pineapple silk, as well as others, such as Bamboo, among others in Polyester fabric and 6 pcs. shank buttons (see attached sample)		
	<u>Blouse 2</u> - Mini Kimono Sleeves, round neck off white blouse accentuated with woven trimmings (Kalinga pattern from Mindanao, or any pattern closest thereof), shall contain at least 5% by weight for abaca, banana or pineapple silk, as well as others, such as Bamboo, among others in polyester fabric, and 6 pcs. shank buttons (see attached sample)		
	<u>Slacks</u> - These women's slack have a pleated and flared style with a waist tie-up. Made of 87% cotton and 13% linen in a black color. The specification sheet provides the measurements for sizing a sample size, including waist circumference, inseam length, thigh width, and other key dimensions. It also lists the features and materials used, such as front pockets, belt loops, zipper, and labels.(see attached sample)		
	<u>Skirt</u> - These women's skirt made of 75% cotton and 25% linen in a black color. The specification sheet provides the measurements for sizing, including waist circumference, hip, length, cuff, weight and height and other key dimensions. It also lists the features and materials used, such as zipper, and labels.(see attached sample)		
2.	Male: Color/Material - 235 sets (Composed of 2 polo & 1 slacks per set)		
	<u>Polo Barong 1</u> - Short sleeves Off-white trubenized polo barong accentuated with 3/4-length vertical woven trimmings (Kalinga pattern from Mindanao, or any pattern closest thereof), shall contain at least 5% by weight for abaca, banana or pineapple silk , as well as others, such as Bamboo, among others in polyester fabric, and 8 pcs. shank buttons. (see attached sample)		

	Polo Barong 2 - Short sleeve trubenized polo jacket accentuated with woven trimmings (Kalinga pattern from Mindanao, or any pattern closest thereof) on the collar and vertical inverted pleats in Off-white polyester fabric, 5% by weight for abaca, banana or pineapple silk, as well as others, such as Bamboo, among others and front pocket on the right chest and 8 pcs. shank buttons (See attached sample)		
	Slack - These men's slack have a pleated and flared style with a waist tie-up. Made of 87% cotton and 13% linen in a black color. The specification sheet provides the measurements for sizing a sample size, including waist circumference, inseam length, thigh width, and other key dimensions. It also lists the features and materials used, such as front pockets, belt loops, zipper, and labels.(see attached sample)		
3.	SCRUBSUIT Female: 5 sets (composed of 5 pairs scrub suit per set) Male: 1 set (composed of 5 pairs scrub suit)		
	Specifications: <ul style="list-style-type: none"> * Elastic waistband and all around drawstring Pants. * Two side pockets in pants and two pockets in shirt * Reversible V-neck shirt * Reinforced neck facing * Half sleeves * Color: White, Pink, Beige, Blue, yellow * Cloth: Peach Twill 		
	Other Requirements:		
	* The bidders Single Largest Completed Contract (SLCC) should have been completed within five (5) years prior to the deadline of submission and receipt of bids. Contracts similar to the project shall be Supply and Delivery of "Heco-Derecho" Office Uniforms;		
	* RA No. 9242 or the Tropical Fabrics Law prescribes the use of Philippine Tropical Fabrics (PTF) for official uniforms of government officials and employees. Thus:		
	1. Participating Bidders shall submit together with their bidding documents, 2" x 2" sample/swatches of fabric, to include swatches of ethnic design (kalinga pattern from Mindanao, or any pattern closest thereof) for the prescribed office uniforms;		
	2. Lowest Calculated and Responsive Bidder shall provide the buttons that are closest to the design sketch following the color specifications (See Annex A);		
	3. In relation to the Section 3, Rule V of the amended Implementing Rules and Regulations of RA No. 9242,		

	the Lowest Calculated and Responsive Bidder shall submit within fifteen (15) working days upon receipt of Notice to Proceed (NTP) of the following required certifications:		
	a. Certificate from DOST-PTRI stating that the fabric is compliant with the provisions of RA. No. 9242;		
	b. Attestation issued by the textile producer stating that their fabric is part of the stock that has been certified by DOST-PTRI as PTF compliant, to include the identification as marked in the selvage of the fabric;		
	c. Permit to transport fibers from DA-PhilFIDA stating the origin of the fiber, such as abaca, banana, pineapple and other fibers;		
	Attached as Annex A, is the collections of pictures of the uniform designs for better appreciation.		
	Scope of Works:		
	1. Within fifteen (15) calendar days upon receipt of the Notice to Proceed, awarded supplier must be able to finalize the taking of body measurements of all entitled officials and employees to the uniform. For the Field Office, the supplier must perform this task during workdays between 8:00 AM to 5:00 PM at the Field Office Main Building while for Bohol, Siquijor and Negros Oriental Province the supplier shall perform their task at their respective SWAD offices within the above office hours without additional expense on the part of the Field Office.		
	2. The tailored uniforms shall be delivered directly to the Field Office VII for Cebu while for Bohol, Siquijor and Negros Oriental the same shall be delivered to their respective SWAD offices within sixty (60) calendar days upon receipt of Notice to Proceed.		
	3. The supplier shall facilitate the fitting of the uniforms in the respective offices in FO VII and SWAD Office of Bohol, Siquijor and Negros Oriental and shall finalize the needed adjustment, if necessary.		
	4. Breakdown/Assignment of uniform is subject to change depending on the preference of the officials or employees on sexual orientation, gender identity and gender expression (SOGIE) is concern.		
	5. The supplier shall provide actual sample before mass production of complete set for men and women.		
	Terms of Payment:		
	* The DSWD FO VII shall pay the supplier in the following schedule:		
	1st Tranche: 10% of the contract amount after taking body measurements.		

	2nd Tranche: 60% of the contract amount after tailoring and sewing with initial delivery of at least 80% of the sets of uniform.		
	3rd Tranche: 30% of the contract amount after repairs/alterations/adjustments and final delivery of the 100% requirements.		
	* Failure to deliver the expected output on time will be subjected to liquidated damages amounting to one-tenth of one percent (0.001%) of undelivered items per day of delay.		


I hereby certify that all statements indicated under the **Statement of Compliance** and **Bidder's Remarks** are true and correct, otherwise, if found untrue and incorrect either during bid evaluation or post-qualification, the same shall give rise to automatic disqualification of our bid.

Name of Company/Bidder

Bidder's Signature over Printed Name

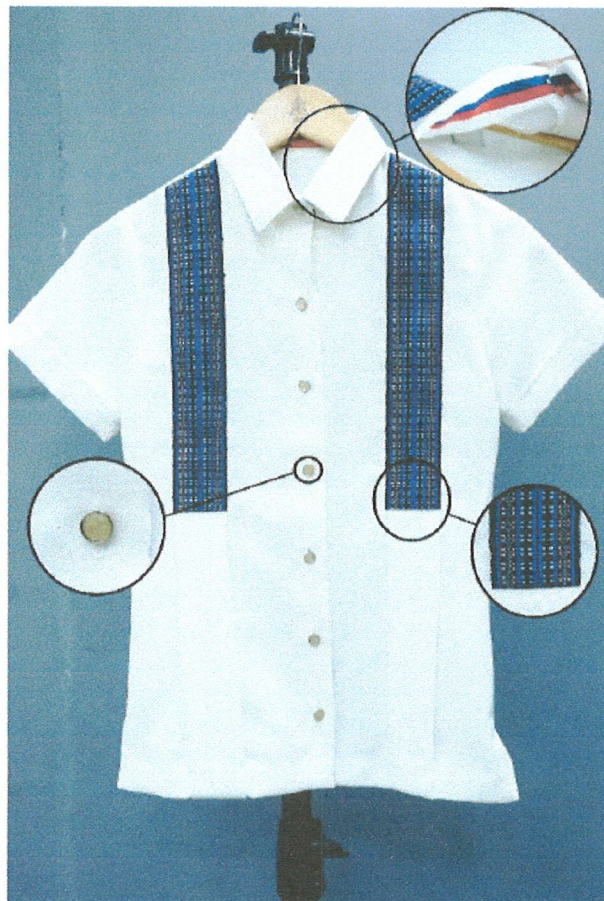
Date: _____

ANNEX A

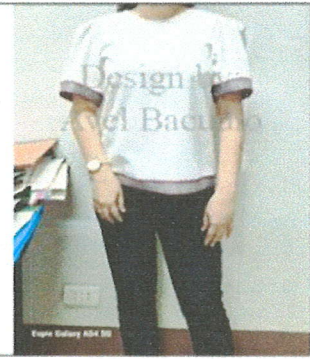
Color/Material	
<p>Blouse 1 – short sleeves Off-white trubenized blouse accentuated with $\frac{3}{4}$ length vertical woven trimmings (Kalinga pattern from Mindanao), shall contain at least 5% by weight for abaca, banana, pineapple, silk, as well as others, such as Bamboo, among others, in polyester fabric, and 6 pcs. shank buttons</p>	



BLOUSE 1

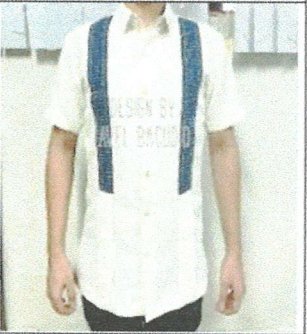


Blouse 2 – Mini Kimono Sleeves, round neck off white blouse accentuated with woven trimmings (Kalinga pattern from Mindanao), shall contain at least 5% by weight for abaca, banana, pineapple, silk, as well as others, such as Bamboo, among others, in polyester fabric, and 6 pcs. shank buttons



BLOUSE 2



Color/Material	
Polo Barong 1 – Short sleeves Off-white trubenized polo barong accentuated with vertical woven trimmings (Kalinga pattern from Mindanao), shall contain at least 5% by weight for abaca, banana, pineapple, silk, as well as others, such as Bamboo, among others, in polyester fabric, and 8 pcs shank buttons	



POLO BARONG 1

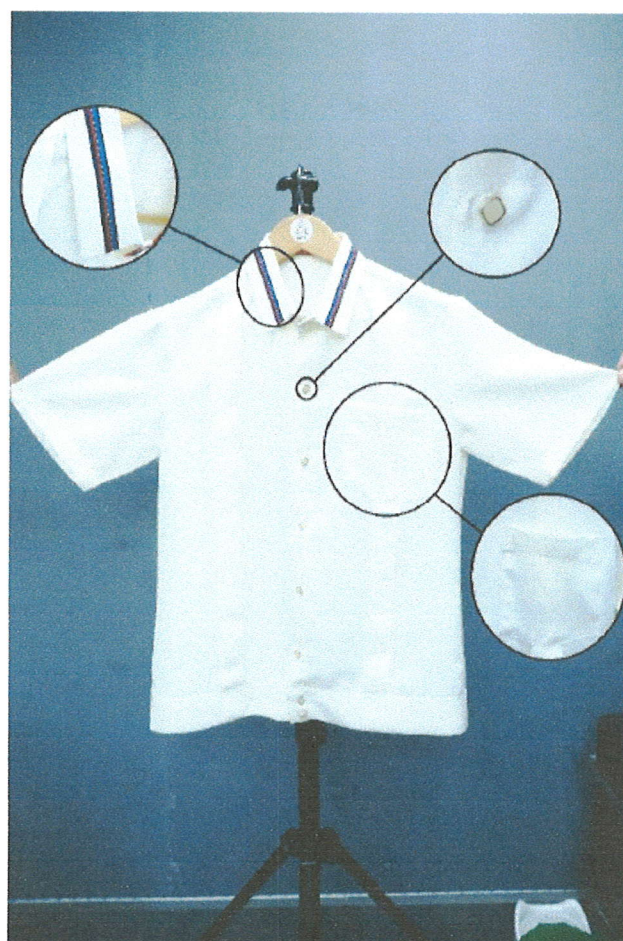


Polo Barong 2 – Short sleeve trubenized polo jacket accentuated with woven trimmings (Kalinga pattern from Mindanao) on the collar and vertical inverted pleats in

Off-white polyester fabric, shall contain at least 5% by weight for abaca, banana, pineapple, silk, as well as others, such as Bamboo, among others, and front pocket on the right chest and 8 pcs. shank buttons



POLO BARONG 2



Women's Slacks Uniform



Women's Skirt Uniform



Men's Slacks Uniform



RSCC- HOUSEPARENTS'

WOMEN



MEN

